

# NEROFIX™

*A subsidiary of Kansai Nerolac Paints Ltd.*

**Registered Office:**

**NEROFIX PRIVATE LIMITED**

Arihant Aura, B-202, 2nd Floor, Plot No D13/1, TTC  
Industrial Area, Turbhe (MIDC), Thane Belapur  
Road, Navi Mumbai - 400705

**Manufacturing Units:**

- Plot No. 15, Sector - 2, 11E Pantnagar, Rudrapur -  
263 153. (Uttarakhand)
- Survey No. 358/1P, Village Dadra, Behind Dadra  
Garden, Dadra & Nagar Haveli (U.T.)

**Customer Care No: 82917 15780**

**Email: [customercare@nerofixindia.com](mailto:customercare@nerofixindia.com)**

**Website: [www.nerofixindia.com](http://www.nerofixindia.com)**

NEROFIX Manufactures a wide range of

- Waterproofing compounds & Repair chemicals
- Adhesives - Industrial and Retail
- Construction chemicals
- Admixtures for Concrete
- Textures and Paints

Disclaimer: The Product information & application details given by the company & its distributors have been provided in good faith & meant to serve only as a general guideline during usage. Users are advised to carry out tests & trials to ensure on the suitability of products meeting their requirements before full-scale usage of products. Since the correct identification of the problems, quality of other materials used and on-site workmanship are factors beyond our control, there is no expressed or implied guarantee/warranty as to the results obtained. The Company does not assume any liability or any consequential damage for unsatisfactory results, arising from the use of our products.

# NEROLAC TURBOFIX



## ADHESIVE SOLUTIONS FOR HVAC



## NEROFIX - Brief Corporate Profile

NEROLAC established Nerofix Private Limited in December 2019 in a joint venture with Polygel Industries Private Limited - a company with diversified expertise in manufacturing speciality chemicals, adhesives and construction chemicals.

NEROFIX is a pan-India organisation based in Mumbai and manufacturing facilities located in Rudrapur (Uttaranchal) and Silvassa (Dadra & Nagar Haveli).

NEROFIX manufactures a wide range of adhesives and various types of construction chemicals and distributes them through its network of distributors in India and South Asia. Our diverse and highly skilled global workforce consists of approximately 150 + employees and a network of over 10,000+ contractors, retailers & distributors.

The joint venture with Polygel has created a growth platform in the adhesives and construction chemical industry. The combination of Kansai Nerolac's pan-India distribution and well-accepted brand image of over 100 years, along with Polygel's deep knowledge of adhesives and construction chemical businesses, positions Nerofix as a potential leader in this industry.

Nerofix's vision is to be an innovative and esteemed manufacturer of speciality adhesives and construction chemicals with a focus on superior performance, productivity, service and a global customer base built on a foundation of sustainable growth.

Our mission is to work together to create a world-class company serving the needs of our customers and employees through innovative and environmentally sustainable products, processes and excellence.

Quality has always been a driving factor for the company. Nerofix is an ISO 9001:2015 company that strictly follows the "Indian Green Building Council" guidelines and adheres to ethically safe, environmental-friendly and specification-based products and solutions. Our R&D set-up is aligned to meet up with customers' requirements, employing state-of-the-art testing and analytical equipment and manufacturing processes to offer optimum solutions for every need.

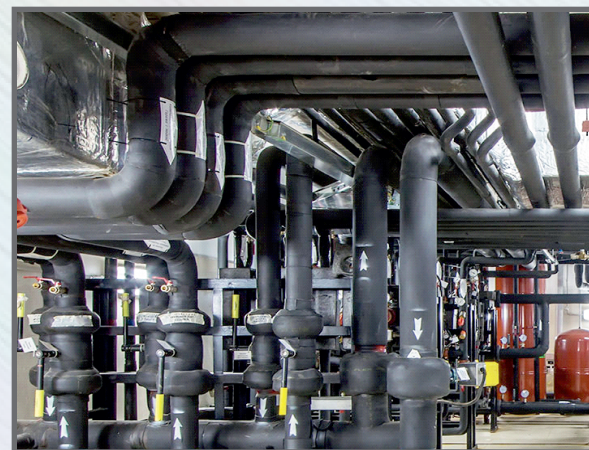
## Key Milestones & Brands

- First company to produce **Anti-termite and Anti-fungal products** which are safe for humans
- Brand leader in construction chemicals and waterproofing systems with **Scott No.1** established in 1956
- Our flagship brand **Turbofix** is a well-accepted and trusted adhesive brand in the various industrial applications

## HVAC SYSTEMS Adhesives | Coatings | Sealants

**Heating, ventilation, and air conditioning (HVAC)** is the use of technology to control the temperature, humidity and purity of the air in an enclosed space. HVAC systems can be used in both domestic and commercial environments to regulate safe and healthy building conditions with respect to temperature and humidity, using fresh air from outdoors.

The three major functions of heating, ventilation, and air conditioning are interrelated, especially with the need to provide thermal comfort and acceptable indoor air quality within reasonable installation, operation, and maintenance costs. Therefore, HVAC equipment & systems have a major impact on energy sources for increasing or reducing electricity consumption. Reduction of electricity consumption or energy saving can be achieved by deploying energy efficient measures through system upgrades and optimisation. As per the industry experts, appropriate selection of insulation and bonding adhesives for HVAC & ducting can ensure reduction in overall maintenance costs and energy bills. Thus, it is significant to use good quality and standard materials for HVAC equipment & systems.



Nerofix recognizes what matters to customers with regards to heating, ventilation and air conditioning (HVAC) equipment. Our high-performance HVAC equipment bonding adhesives and insulation bonding solutions help customers improve their product consistency, make their manufacturing processes more efficient, and lower their overall production & maintenance costs.

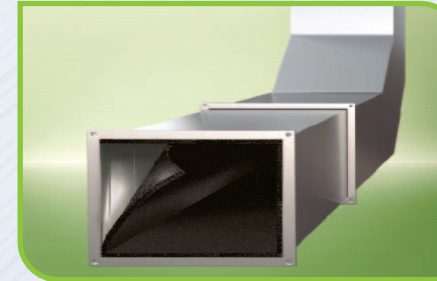
Nerofix is a specialised manufacturer of water based and solvent based adhesives in a range of viscosities. We manufacture low VOC adhesives for a variety of ducting & insulation applications.

## APPLICATIONS

### 1. THERMAL INSULATION



### 2. ACOUSTIC INSULATION



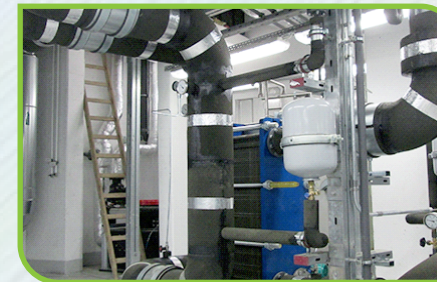
### 3. WALL ACOUSTIC INSULATION



### 4. UNDER DECK INSULATION



### 5. CHILLED WATER PIPE INSULATION

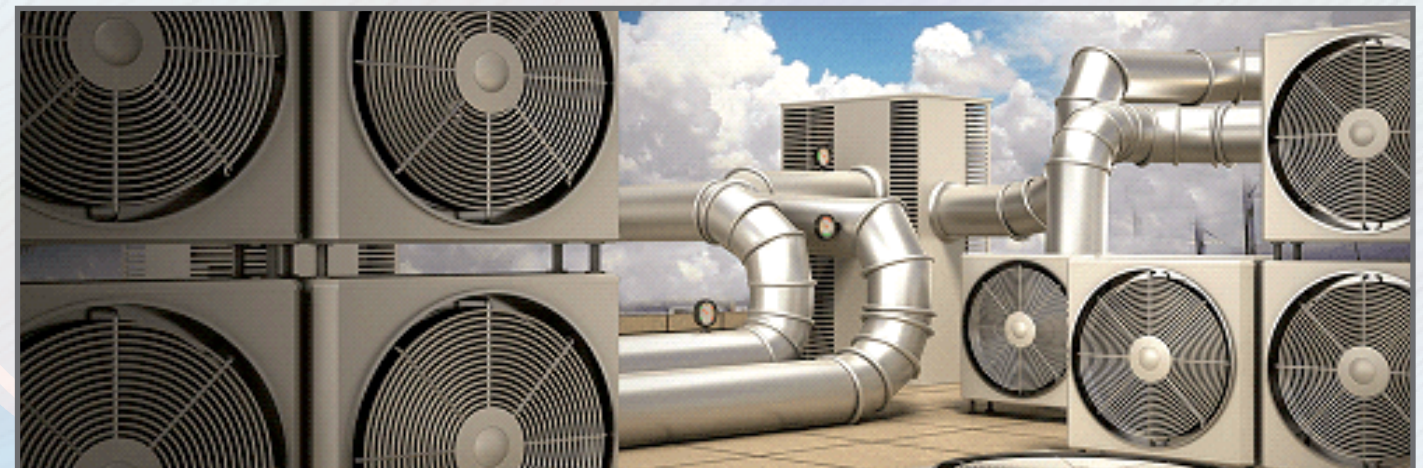


### 6. FLOORING INSULATION



## NEROFIX RANGE OF PRODUCTS FOR HVAC SYSTEMS

- **TURBOFIX-HVAC DUCTCARE - D20** : Low VOC synthetic rubber adhesive for HVAC Systems
- **TURBOFIX-HVAC DUCTCARE - D15** : A speciality product for HVAC with ease of application & higher coverage
- **TURBOFIX-HVAC DUCTCARE - 30-60** : A lag coating green product for green projects with excellent weathering & fungal resistance
- **TURBOFIX SR-900** : Multi-purpose high-strength premium synthetic rubber adhesive for HVAC applications
- **TURBOFIX HVAC DUCTCARE - 30-40** : A Lag Coating green product for Thermal insulation.
- **TURBOFIX HVAC DUCTCARE FRC** : Fire Resistant Coating





## TURBOFIX HVAC DUCTCARE-D20



### A speciality product for HVAC with ease of application & higher coverage

**Turbofix HVAC Ductcare - D20** is a speciality synthetic rubber adhesive developed considering the diverse application needs of various insulation requirements in the HVAC & R segment. It has excellent adhesion to a variety of substrates such as galvanized iron, aluminium & thermally insulating materials such as nitrile rubber, glass wool/rock wool and cross-linked polyethylene to provide insulation requirements for HVAC & R applications.

#### Features:

- No added Benzene
- Low VOC
- Mild smell – User-friendly
- Ease of application
- Higher coverage
- Excellent bond strength
- Good heat, oil & water resistance
- Good ageing resistance – bond durability

#### Recommended method of application:

- The substrates to be bonded should be dry (free from moisture), clean and free from rust, dust, grit, loose materials, oil & grease
- Stir the adhesive well in order to have a homogeneous material prior to use
- By using a brush or spreader, apply a thin uniform coat of adhesive to both substrates to be bonded. First, apply on a nonporous surface & then on the porous surface. In the case of glass wool/rock wool application is to be done only on metal/ concrete surfaces
- Once the adhesive layer becomes tacky (when tack is developed) assemble both substrates with uniform firm contact pressure, particularly at the edges
- Cure the assembly at ambient temperature for a minimum of 24 hrs

**Packing:** 1 ltr, 5 ltr & 25 ltr Metal containers

Test Parameter	Properties
Colour & Appearance	yellow medium viscous liquid
Viscosity @30°C (Brookfield/RVDV-E)	900 – 1300 cps
Density @ 30°C	0.85 + 0.03 g/ml
Temperature resistance	-30°C to 85°C
VOC Content	< 400 gm/ltr
Coverage at ambient temperature by un notched spreader (when tested in controlled ideal lab conditions on smooth non-absorbent/nonporous substrate single side application typical test data)	6 to 7 M2/ltr*/coat *Coverage varies due to changes in application method, surface type & ambient conditions

#### Application Segments:

- Hospitals
- Airports
- Corporate offices
- Hotels & Malls
- Industries – Chemical, pharmaceuticals
- Research Labs & Soundproof rooms
- Residential & Commercial projects

#### Application areas:

- AC Ducting - To bond nitrile rubber, cross-like Polyethylene, glass wool and rock wool to galvanized iron/aluminium duct surface
- Chilled water piping – To bond nitrile rubber, cross liked polyethylene, glass wool and rock wool to painted MS pipeline surface
- Under-deck insulation – To bond nitrile rubber, cross liked polyethylene/glass wool/rock wool to smooth concrete surface - fasteners are recommended for under-deck insulation
- Acoustic insulation - To bond specialized nitrile rubber to smooth concrete wall surface

## TURBOFIX HVAC DUCTCARE-D15



### A speciality product for HVAC with ease of application & higher coverage

**Turbofix HVAC Ductcare-D15** is a speciality synthetic rubber adhesive developed considering the diverse application needs of various insulation requirements in the HVAC & R segment. It has excellent adhesion to a variety of substrates such as galvanized iron, aluminium & thermally insulating materials such as nitrile rubber, glass wool/rock wool and cross-linked polyethylene to provide insulation requirements for HVAC & R applications.

#### Features:

- No added Benzene
- Mild smell – User-friendly
- Ease of application
- Higher coverage
- Excellent bond strength
- Good heat, oil & water resistance
- Good ageing resistance – bond durability

#### Recommended method of application:

- The substrates to be bonded should be dry (free from moisture), clean and free from rust, dust, grit, loose materials, oil & grease
- Stir the adhesive well in order to have a homogeneous material prior to use
- By using a brush or spreader, apply a thin uniform coat of adhesive to both substrates to be bonded. First, apply on a nonporous surface & then on a porous surface. In the case of glass wool/rock wool application is to be done only on metal/ concrete surfaces
- Once the adhesive layer becomes tack-free (when tack is developed) assemble both substrates with uniform firm contact pressure, particularly at the edges
- Cure the assembly at ambient temperature for a minimum of 24 hrs

**Packing:** 1 ltr, 5 ltr & 25 ltr Metal containers

Test Parameter	Properties
Colour & Appearance	Light brown medium viscous liquid
Viscosity @30°C (Brookfield/RVDV-E)	1000 – 1300 cps
Density @ 30°C	0.85 + 0.03 g/ml
Temperature resistance	-30°C to 85°C
Coverage at ambient temperature by un notched spreader (when tested in controlled ideal lab conditions on smooth non-absorbent/nonporous substrate single side application typical test data)	6 to 7 M2/ltr*/coat *Coverage varies due to changes in application method, surface type & ambient conditions

#### Application Segments:

- Hospitals
- Airports
- Corporate offices
- Hotels & Malls
- Industries – Chemical, pharmaceuticals
- Research Labs & Soundproof rooms
- Residential & Commercial projects

#### Application areas:

- AC Ducting - To bond nitrile rubber, cross-like Polyethylene, glass wool and rock wool to galvanized iron/aluminium duct surface
- Chilled water piping – To bond nitrile rubber, cross liked polyethylene, glass wool and rock wool to painted MS pipeline surface
- Under-deck insulation – To bond nitrile rubber, cross liked polyethylene/glass wool/rock wool to smooth concrete surface - fasteners are recommended for under-deck insulation
- Acoustic insulation - To bond specialized nitrile rubber to smooth concrete wall surface



## TURBOFIX HVAC DUCTCARE-30-60



### A lag coating green product for green projects with excellent weathering & fungal resistance

**Turbofix HVAC Ductcare 30-60** is a water-based non-flammable formulation specially developed for coating AC ducts, chilled water pipelines to have excellent weather & UV resistance coupled with excellent fungal resistance.

#### Features:

- Water-based formulation – mild smell
- Non-flammable
- Low VOC – green product
- Excellent fungal resistance
- Excellent UV & weathering resistance
- Excellent resistance to fire & smoke spreading
- Reduction in water vapour permeability

#### Recommended method of application:

- Clean the insulated substrates properly so that they are clean & free from dust, rust, oil & grease etc.
- Stir well Turbofix Ductcare 30-60 to have a homogeneous material prior to use
- Apply smoothly on insulated substrates a thin layer coating by brush & immediately wrap the glass/canvas cloth taking care so that no air pockets are formed & firm surface contact is there. Please ensure that wetting of glass/canvas cloth is perfect
- When the surface is dry, apply additional coats of the adhesive on wrapped cloths so that a smooth, neat uniform coated surface is achieved
- Allow curing at ambient for minimum 24 hrs. However, curing period can vary depending on ambient & climatic conditions

**Packing:** 20 kg HDPE container

Test Parameter	Properties
Colour & Appearance	White thixotropic opaque paste
Viscosity at 30°C	50000-80000 cps
Coverage	1.2 to 1.5 m2 /per kg with 3 coats
Service temperature	-20 to + 70 °C
Surface drying time at ambient temperature	15-20 minutes
Cure time at ambient temperature	24-48 hrs. depending on the climatic conditions
Wet flammability	Conforms as per ASTM D3278
Fungal resistance	Conforms as per ASTM D5590
Weathering resistance	Conforms as per ASTM D6695
Flammability	Conforms as per ASTM D4804

#### Application Segments:

- Hospitals
- Airports
- Corporate offices
- Hotels & Malls
- Industries – Chemical, pharmaceuticals
- Research Labs & Soundproof rooms
- Residential & Commercial projects

#### Application areas:

- Protective coating on AC ducts & chilled water pipelines - Excellent water resistance, UV resistance, fungal & flame resistance
- Higher mechanical strength will enhance the durability of AC ducts & chilled water piping
- Excellent resistance to bird perching



## TURBOFIX SR 900



### High-strength premium synthetic rubber adhesive for HVAC applications

**Turbofix SR-900** is a high-strength synthetic rubber adhesive developed considering the diverse application needs of various insulation requirements in the HVAC & R segment. It has excellent adhesion to a variety of substrates such as galvanized iron, aluminium & thermally insulated materials such as Nitrile rubber, glass wool/rock wool and cross-linked polyethylene to provide insulation requirements of HVAC & R applications.

#### Features:

- No added Benzene
- Mild smell – User-friendly
- Excellent bonding performance on curved surface
- Excellent resistance to spring back
- Superior performance at sub-zero temperatures
- Excellent bond strength on curved surfaces
- Good heat, oil & water resistance
- Good ageing resistance – bond durability

#### Recommended method of application:

- The substrates to be bonded should be dry (free from moisture), clean and free from rust, dust, grit, loose materials, oil & grease
- Stir the adhesive well to have homogeneous material prior to use
- By using a brush or spreader, apply a thin uniform coat of adhesive to both substrates to be bonded. First, apply on a nonporous surface & then on a porous surface. In the case of glass wool, rock wool application is to be done only on metal/ concrete surfaces
- Once the adhesive layer becomes tack-free (when tack is developed) assemble both substrates with uniform firm contact pressure, particularly at the edges
- Leave/cure the assembly at ambient temperature for a minimum of 24 hrs.

**Packing:** 1 ltr, 5 ltr & 25 ltr Metal containers

Test Parameter	Properties
Colour & Appearance	Dark brown liquid
Viscosity @30°C (Brookfield/RVDV-E)	1900 - 2300 cps
Density @ 30°C	0.85 + 0.03 g/ml
Temperature resistance	-30°C to 96°C
Coverage at ambient temperature by unnotched spreader when tested in controlled ideal lab conditions on smooth non-absorbent/nonporous surface single side application typical test data	*5 to 6 square meters per litre/coat *Coverage varies due to changes in application method, surface type & ambient conditions

#### Application Segments:

- Hospitals
- Airports
- Corporate offices
- Hotels & Malls
- Industries – Chemical, pharmaceuticals
- Research Labs
- Residential & Commercial projects
- Soundproof rooms

#### Application areas:

- AC Ducting - To bond nitrile rubber, cross-like Polyethylene, glass wool and rock wool to galvanized iron/aluminium duct surface
- Chilled waterpiping– To bond nitrile rubber, cross liked polyethylene, glass wool and rock wool to painted MS pipeline surface
- Under-deck insulation– To bond nitrile rubber, cross liked polyethylene/glass wool/rock wool to smooth concrete surface - fasteners are recommended for under-deck insulation
- Acoustic insulation - To bond specialised nitrile rubber to smooth concrete wall surface wall paneling for cold storage



# TURBOFIX HVAC DUCTCARE FRC

## Fire Resistant Coating

### Description

**Turbofix HVAC Ductcare FRC** is a water-based fire resistant coating formulated with special binders and fillers to provide 120 minutes fire resistance to GSS/MS Duct work system, pipes, electrical cables and steel structures. Turbofix HVAC Ductcare FRC resists flame spread and protects the mineral fibres against fire penetration by significantly reducing the permeability of the mineral fibre core and prevents the passage of hot gases, thus reducing the temperature rise on the unexposed side and reducing heat conduction through the building services. It is globally advocated by consultants, contractors, and clients for ductwork in non-domestic kitchens, basements, enclosed car parks, smoke escape routes, stairways, and lobbies. It offers tremendous versatility in terms of design, application, robustness, rendering easy, time- saving and effective installation.

### Special Features & Benefits:

- Fire Retardant complies to BS 476 Part 6 & 7
- Tested for 2 hours (Flame directly exposed on duct sheet)
- Reduction in duct gauge construction or thickness
- Reduction in duct reinforcement
- Excellent Impact Resistance
- Anti Corrosive & Anti Bacterial

### Application:

- Kitchen Exhaust Duct
- Car Park Extract Duct
- Smoke Extraction Duct
- Stair Pressurization Duct
- Fire rated walls and floors
- The system will also maintain the acoustic design performance
- Suitable for most surfaces, included concrete, masonry, steel, gypsum, glass, plastics and most non-porous surfaces

### Features:

- Permanently flexible - will accommodate movements during fire and smaller movements in the construction it has been fitted within
- Easy and very quick to apply
- The coating applied on mineral fibres is classified for all types of constructions with or without building service penetrations
- May be used in unlimited lengths in walls with heights up to 1200mm and in floors with widths up to 120mm - May be installed in gypsum walls without framing around the opening
- Paintable with most water based and alkyd paints
- Easy to clean
- Once fully cured, resistant of water and frost

### Recommended method of application:

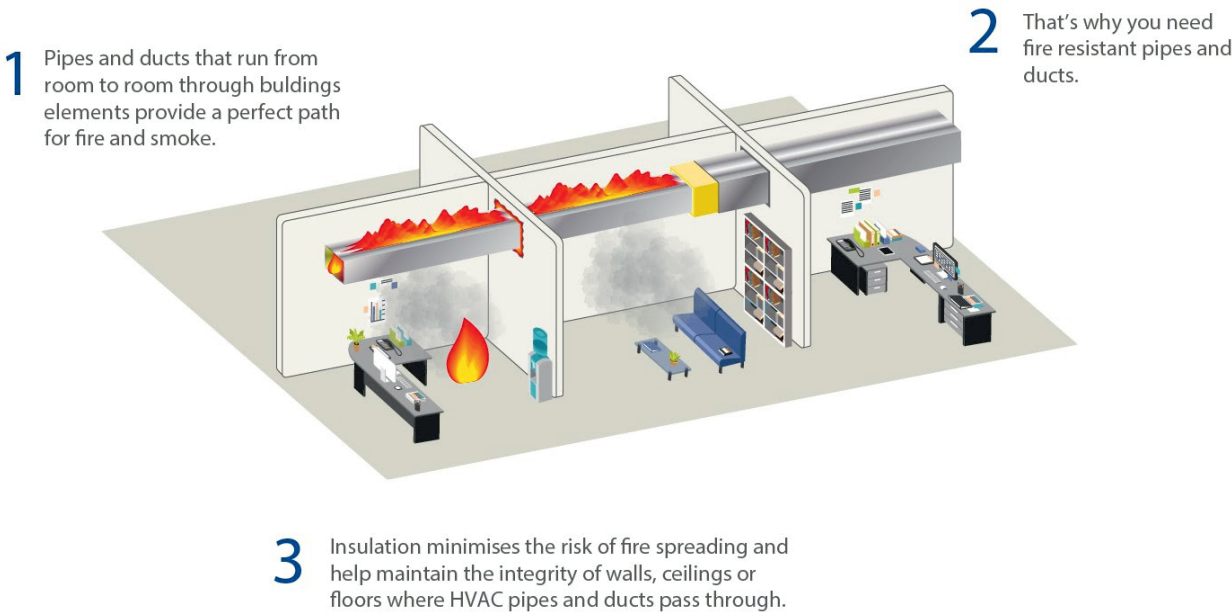
1. Clean the Insulated substrates properly so that they are clean & free from Dust. Rust, Oil grease etc.
2. Stir well Turbofix HVAC Ductcare FRC to have a homogeneous material prior to use.
3. Apply smoothly on insulated substrates a thin layer coating by brush & immediately wrap the Glass / canvas cloth taking care so that no air pockets are formed & firm surface contact is there. Please Ensure that wetting of Glass/ Canvas cloth is perfect
4. When the surface is dry additional coats of the adhesive on wrapped cloths so that a smooth, neat uniform coated surface is achieved
5. Allow curing at ambient for minimum 24 hrs. However curing period can vary depending on ambient & climatic conditions

### Technical typical data

Test Parameter	Properties
Colour & Appearance	White/off white
Viscosity at 30 degree	50000 to 70000 cps
Coverage	1 – 1.2 kg/m2 with 7mm DFT on Duct Surface
Application temperature	5 to 55 Deg C
Surface Drying Time at ambient temperature	4 to 6 hours
Cure time at ambient temperature	24 hours
Wet flammability	Fair Resistance
Fungal resistance	good
Weathering resistance	good
Flammability	Low flammability
Fire rating	As per BS 476 Part 6 & f
2 hours fire performance	Flame exposed directly on coating (700 micron DFT) at 120 ° C
Corrosion Resistance	ASTM D 1654
Artificial Weathering	ASTM G 154
Pull of Stregth	ASTM D 4541
Specific Gravity	1.38+/- 0.02
Solid Content	65% +/- 2%

### Packaging:

20 kg HDPE containers





A Lag Coating green product for Thermal insulation

Description

**Turbofix HVAC Ductcare 30-40** is a tough and flexible adhesive and sealant, forming a durable seal against air leakage. Due to its excellent water, U.V. and abrasion resistance it can be used on metal ducts outdoor as well as indoor thermal insulations. It is a water-based non-flammable formulation for coating on AC ducts, Chilled water pipelines with an excellent fungal resistance.

Application areas:

- Protective coating on AC ducts & chilled water pipelines - Excellent water resistance, UV resistance, fungal & flame resistance
- Higher mechanical strength will enhance the Durability of AC ducts & chilled water piping.
- Excellent resistance to bird perching

Features:

1. Good adhesion and high strength.
2. Water resistant can be washed with mild soap.
3. Non-toxic & non- flammable.
4. Excellent UV & weathering resistance
5. Chemical resistance.
6. Antifungal & antibacterial.
7. Resists high temperature
8. Highly waterproof.
9. Excellent resistance to fire & smoke spreading
- 10.Reduction in water vapour permeability

Recommended method of application:

1. Clean the Insulated substratesproperly so that they are clean & free from Dust. Rust, Oil grease etc.
2. Stir well Turbofix HVAC Ductcare 30-40 to have a homogeneous material prior to use.
3. Apply a tack coat of Turbofix HVAC Ductcare 30-40 @ 4 to 6 m2 per kg. After applying tack coat immediately imbed the selected lagging fabric smoothly in to the wet coating. Apply 2 finish coat of Turbofixduct care 30-40 at rate of 5 to 6 m2 / kg. It is very important to ensure that each coat is totally cured before the next coat is applied. The dry film thickness will vary with fabric selected.

Mode of Application:

**Brush** - Use suitable paint brush and apply with full brush and spread out evenly.

**Roller** - Use medium size paint roller and dipped fully and spread out evenly.

**Spray** - Turbofix HVAC Ductcare 30-40 can be applied with airless spray. For airless equipment information, please contact your equipment supplier followed by product viscosity mentioned in data.

Application Segments:

- Hospitals
- Airports
- Corporate offices
- Hotels & Malls
- Industries – Chemical, pharmaceuticals
- Research Labs & Soundproof rooms
- Residential & Commercial projects



Technical typical data

Test Parameter	Properties
Test Parameter	White Paste
Appearance	White
Color	Thixotropic like paste
Consistency	60 ± 5 (As per guidelines of ASTM D 1644-01)
Non volatile Content	4 to 6 m2 per kg @ 150 to 210 DFT depends on the method of application
Coverage (Typical data)	25000 to 50000 cps
Viscosity (Brookfield) @ 250 C, rpm 10, Sp 7	1.35 ± 0.07 (As per guidelines of ASTM 1475-98)
Specific gravity	45 minutes (at 200c, 50% rel. humidity)
Bonding time (Typical data)	3 to 4 hours * depending on ambient temp As per guidelines of ASTM D 16 to 0-03
Drying time	As per guideline ASTM E 84 Flame spread- 35
Surface burning characteristics	Smoke developed- 300
Water permeance (perms)	As per guideline ASTM E-96 Inch pound unit
Cured film	Flexible, tough
Water tightness	Excellent
Chemical resistance	Good
Insulation properties	Excellent
UV resistance	Excellent







Packaging:

20 Kg HDPE conatiner





TECHNICAL DATA

GRADE NAME	POLYMER BASE	APPEARENCE	SALIENT FEATURES	VISCOCITY	DRYING TIME	TACK RETENTION TIME	SHELF LIFE @ 30°C	WORKING TEMPERATURE	SKU'S
<div>Turbofix HVAC Ductcare D20</div> <div></div>	Synthetic Rubber	Yellow	<ul style="list-style-type: none"><li>Low VOC Multi-purpose high strength adhesive to bond Nitrile rubber, EDPM, XLPE, glass wool to duct surface</li><li><b>Application:</b><ol style="list-style-type: none"><li>Thermal insulation</li><li>Acoustic insulation</li><li>Wall acoustic insulation</li><li>Under deck insulation</li><li>Chilled water pipe insulation</li><li>Flooring insulation</li></ol></li></ul>	900 -1300 cps	0 to 60 sec	2 to 60 min	12 months	10 to 50°C	1, 5 Ltr & 25 Ltr Metal container
<div>Turbofix HVAC Ductcare D15</div> <div></div>	Synthetic Rubber	Light Brown	<ul style="list-style-type: none"><li>Excellent adhesion to a galvanized iron, aluminum to bond nitrile rubber, glass wool/rock wool and cross-linked polyethylene</li><li><b>Application-</b><ol style="list-style-type: none"><li>AC Ducting</li><li>Chilled water pipe insulation</li><li>Under deck insulation</li></ol></li></ul>	1000 – 1300 cps	20 - 40 sec	2 to 60 min	12 months	10 to 50°C	1, 5 Ltr & 25 Ltr Metal container
<div>TURBOFIX SR-900</div> <div></div>	Synthetic Rubber	Dark Brown	Low VOC Multi-purpose high strength adhesive to bond Nitrile rubber, EDPM, XLPE, glass wool to duct surface	1900 – 2300 cps	20 – 30 sec	2 to 60 min	12 months	10 to 50°C	1, 5 Ltr & 25 Ltr Metal container
<div>Turbofix HVAC Ductcare 30-60</div> <div></div>	Synthetic Resin	Off white	Excellent Weathering, UV & Fungal resistance Non-flammable	50000 - 80000 cps	Curing time 48 hrs	NA	12 months	< 80°C	20 kg HDPE container
<div>Turbofix HVAC Ductcare 30-40</div> <div></div>	Synthetic Resin	White	<p>Good adhesion, high temperature &amp; water resistant, antifungal &amp; antibacterial, non-toxic &amp; non-flammable with excellent UV, flame &amp; weathering resistance</p> <p><b>Application:</b></p> <ul style="list-style-type: none"><li>Protective coating on AC ducts &amp; chilled water pipelines</li><li>Higher mechanical strength will enhance the durability of AC ducts &amp; chilled water piping.</li><li>Excellent resistance to bird perching</li></ul>	25000 - 50000 cps	3 to 4 hours * depending on ambient temp As per guidelines of ASTM D 16-03	NA	12 months	0-112°C	20 kg HDPE container
<div>Turbofix HVAC Ductcare FRC</div> <div></div>	Synthetic Resin	White	<ul style="list-style-type: none"><li>Permanently flexible, easy &amp; quick to apply, Can be used in unlimited lengths, paintable with most water based and alkyd paints, easy to clean once fully cures, resistant to water &amp; frost</li><li><b>Application:</b><ul style="list-style-type: none"><li>Kitchen Exhaust Duct</li><li>Car Park Extract Duct</li><li>Smoke Extraction Duct</li><li>Stair Pressurization Duct</li><li>Fire rated walls and floors</li><li>The system will also maintain the acoustic design performance</li></ul></li><li>Suitable for most surfaces, included concrete, masonry, steel, gypsum, glass, plastics and most non-porous surfaces</li></ul>	50000 - 70000 cps	4 to 6 hours	NA	12 months	0-112°C	20 kg HDPE container



PRODUCT APPLICATION

Substrate/Product	THERMAL - ACOUSTIC INSULATION - CHILLED WATER PIPING			
	Turbofix HVAC Ductcare - D20	Turbofix HVAC Ductcare - D15	Turbofix SR 900	Turbofix HVAC Ductcare - 30-60
Nitrile Rubber	✓	✓	✓	✓
XLEP	✓	✓	✓	✓
Glass Wool	✓	✓	✓	✓
Rock Wool	✓	✓	✓	✓
EPS/XPS				✓
PUF	✓		✓	✓
Phenolic Foam	✓	✓	✓	✓

Substrate/Product	UNDER DECK INSULATION – WALL ACOUSTIC			
	Turbofix HVAC Ductcare - D20	Turbofix HVAC Ductcare - D15	Turbofix SR 900	Turbofix HVAC Ductcare - 30-60
Nitrile Rubber	✓	✓	✓	✓
XLEP	✓	✓	✓	✓
Glass Wool	✓	✓	✓	✓
Rock Wool	✓	✓	✓	✓
EPS/XPS				✓
PUF	✓		✓	✓
Phenolic Foam	✓	✓	✓	✓

Handling Precautions & Shelf Life

Handling Precautions:

- Always work in good-ventilated areas
- Use safety equipment such as goggles, masks, hand gloves and shoes
- Always keep the adhesive container in a tightly closed condition after use
- Do not work near open-necked flames, fire spots or welding spots as the adhesive contains flammable solvents
- Refer to the respective product Safety Datasheet (MSDS) for more details

Storage & Shelf life:

12 months from the date of manufacture, only when the product is stored in its original sealed container under dry conditions, away from direct sunlight and moisture at ambient temperature as per our recommendations.



Nerofix – Service & Support

Whatever challenges you may be facing, there's a Nerofix solution that delivers optimal adhesion, convenience and reliability

- Compatibility tests on various materials
- Efficient delivery and inventory management solutions
- Customised packaging
- Superior after sales service
- Third party testing and approvals
- Practical knowledge & skills sharing
- Provide application methods if required by customer
- On-site application training wherever required

